

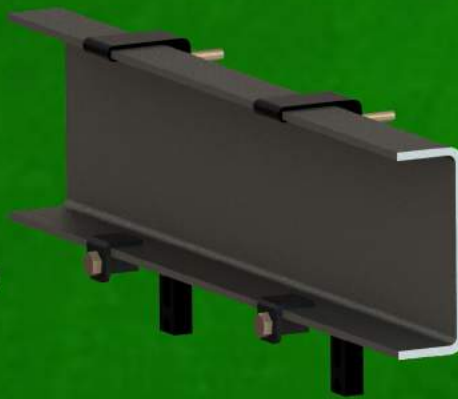


HOW OUR UNIT HEATS WHERE OTHERS DON'T

In a typical heat pump system, energy in the outside atmosphere is transferred to the inside providing either heat or cooling. The problem is that at temperatures nearing zero degrees, there is not enough heat outside for the system to work properly. Our heat pump system is different. With our patented reversing system, our unit's fan and other components reverse to pull heat off of the engine. This allows the HP2000 to keep you warm and comfortable without the need for an additional fuel-fired heating system!

MOUNTS ON FRAME RAILS

The HP2000 mounts on approximately 21" of frame rail. No drilling of the frame rail is required. With the optional, patent-pending "lowpro" mount, the APU mounts flush with the top of the frame rail. This is needed on some trucks that require the mounting location below the cab.



EVAPORATOR UNIT

The evaporator unit conveniently mounts in a storage compartment under the bunk. With some trucks, the air discharge from the evaporator can be incorporated into the trucks existing duct work. Compact in size, the evaporator is a mere 19" x 8" x 8.5" and will fit almost anywhere in your cabin or storage compartment.



HP2000

AUXILIARY POWER UNIT®

QUALITY WITHOUT COMPROMISE.



DESIGNED AND MANUFACTURED BY:



CALCULATE YOUR SAVINGS ONLINE!

WWW.HP2000APU.COM

WWW.HP2000APU.COM



QUIET HEAT PUMP SYSTEM

With over 15 years of proven success in design and manufacturing, the HP2000 is truly the best, most fuel efficient APU on the market. It is built to handle the extreme temperatures and conditions drivers face each and every day. By eliminating the need for the truck's engine to idle, fuel usage is cut by approximately 90%, engine wear and tear is reduced by 100% while providing the comfort of a climate controlled cab for the driver.

KEEPS YOU COOL, WARM, AND POWERED UP

Heat Pump System Provides:

- 20,000 BTU Heating
- 20,000 BTU Cooling
- Provides 12 volt DC
- 65 -120 amp charging power for vehicle batteries (110 Volt AC Inverter Package with Shore Power is Available)

STRONG. LIGHT. QUIET.

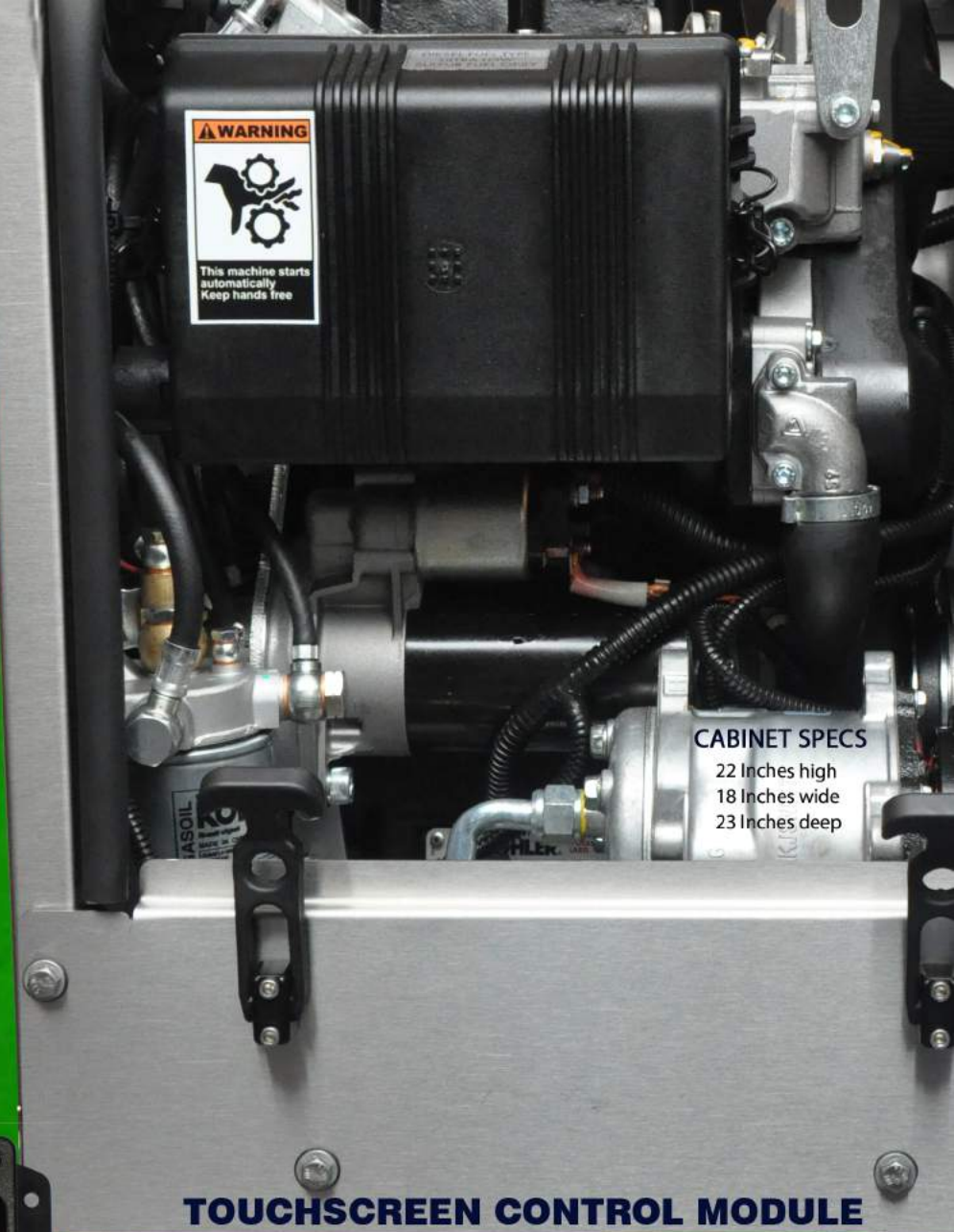
The proven electric start, two-cylinder Kohler and Perkins diesel engines drive our patented heat pump system. The HP2000 requires little maintenance, and runs smooth and quiet at only 64dB. The tough, insulated, locking enclosure reduces sound and protects the internal equipment. Both stainless steel and black, powder coated cabinet options available. Installed, the entire system weighs in at only 345 lbs!



CALL NOW! 855-472-0002
www.hp2000apu.com

MULTIPLE APPLICATIONS

For over 15 years, Parks Industries has been designing and building APU's in the heart of the USA. We have furnished our APU to **Overseas Military Applications, Airports, Construction Equipment, Emergency Vehicles** as well as **Class 7 and 8 trucks.**



CABINET SPECS
22 Inches high
18 Inches wide
23 Inches deep

TOUCHSCREEN CONTROL MODULE

The controls are accurate, informative and easy to operate. Set the temperature, and the system maintains it automatically. The touchscreen allows for easy adjustment of the set temperature, set voltage as well as calendar start functions. Multiple modes allow you to select between Climate Control, Battery Monitor or Storage modes. All of the modes are easily customizable to suit your requirements. Time, battery voltage, temperatures, engine run hours and much more information is always at your fingertips.

THE CLEAN, FUEL-EFFICIENT SOLUTION TO REGULATIONS AND CLIMATE CONTROL

INSTALLATION IS QUICK AND SIMPLE

The complete HP2000 APU system can be fully installed in about 6-8 hours. Our plug-n-play electrical design streamlines the installation process. Like that factory look? The in-cab evaporator and air ducting system of the HP2000 can be integrated into most trucks factory air ducting system.

KOHLER AND PERKINS WATER-COOLED DIESEL ENGINE OPTIONS AVAILABLE

You have the options of both a Kohler or Perkins engine to power your HP2000 APU. Both engines are two-cylinder, tier 4 final diesel engines and have been proven to deliver years of service. Both engines are quiet and consume approximately 1/10 of a gallon of diesel fuel per hour under a full load.

FULLY TESTED AND PROVEN

All of the components that make up the HP2000 Xtreme have been extensively tested to ensure years of problem free use.